



Power-class.
Expect more performance.

MAGNETOM Symphony

www.siemens.com/healthcare

SIEMENS

MAGNETOM Symphony with Power-class:

Our MRI does more to boost your ROI.

It's already one of the world's most in-demand 1.5T MRIs in its class. And now, we've packed even more power into MAGNETOM Symphony™. Introducing Power-class. A potent array of cutting-edge applications that accelerate performance like never before. Now you'll be able to see the tiniest details with incredible clarity. Breeze through exams with ease. And expand into profitable new areas. MAGNETOM Symphony with Power-class. More power to you.



A powerful argument for being able to do it all.

Imagine. Pristine images in record time for every body region – even with severe motion. Isotropic head scans. High-resolution breast imaging as a standard feature. And scan times reduced up to 75%.* It's all possible with Power-class.

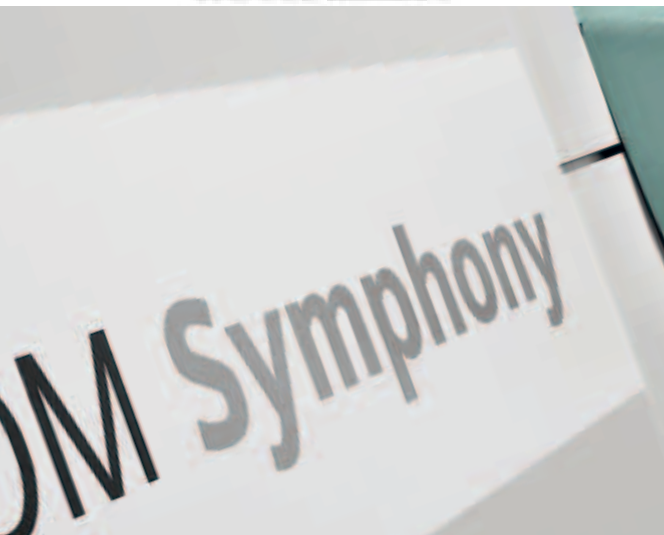
Combining innovative clinical applications with enhanced workflow simplicity, MAGNETOM Symphony with Power-class enables you to see more. And do more. Now you'll easily image and diagnose some of the most difficult patients – elderly, pediatric, neurological or orthopedic.

syngo[®] makes MRI simple.

Power-class makes MAGNETOM Symphony so fast and easy to use, you can get started right away. No matter who's at the controls. *syngo*, Siemens' easy-to-use and intuitive software platform, enables efficient workflow across modalities with "one-click" simplicity.

The basis for all Power-class applications, *syngo* lets you expand your capabilities in every field – from women's health to neurology. *syngo* can also reduce your training and support requirements to positively impact your bottom line.

*Results may vary. Data on file.



Expect more performance:

With Power-class, extraordinary comes standard.

While our wide range of applications is unique, what's really revolutionary is that many of them come standard with MAGNETOM Symphony with Power-class.

Like our exclusive Integrated Panoramic Array™ (IPA) coil technology that allows you to simultaneously scan with a combination of up to four coils, for easy handling and patient set-up that substantially reduces exam time.

syngo GRAPPA, also standard with Power-class, offers a technique for Parallel Image acquisition which quickly delivers images with excellent resolution. In fact, you can scan an L-spine in up to one minute. And MAGNETOM Symphony with Power-class is the only MRI in its class that includes high-resolution 3D breast exams with Parallel Imaging as a standard feature with *syngo* VIEWS.

syngo SPACE replaces time-consuming multiple 2D acquisitions with a single 3D image, and allows physicians to visualize the very small lesions.

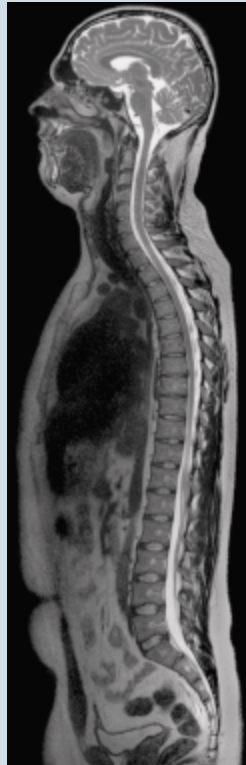
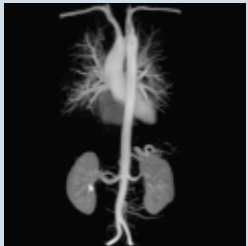
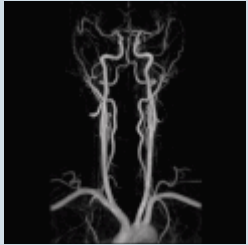
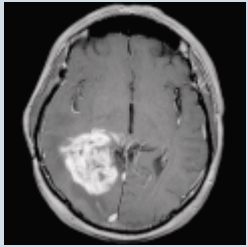
Integrated Panoramic Array: The power of

Only Siemens offers Integrated Panoramic Array (IPA) for even faster and more comfortable MRI exams. IPA allows flexible combinations of up to four different coils, so you can expand the anatomic range of coverage without coil or patient repositioning. This can save up to five minutes per procedure or patient.

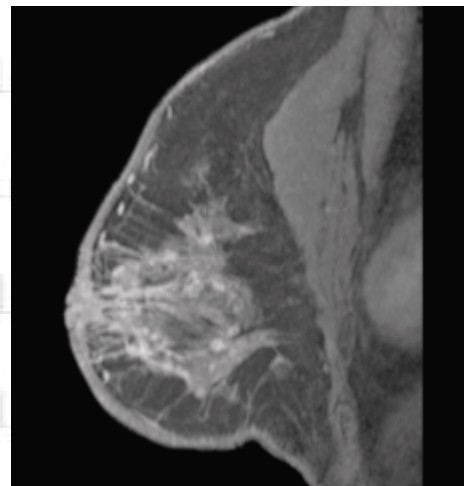
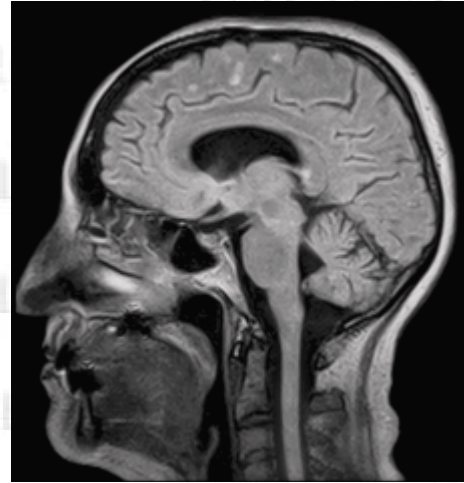
In addition, MAGNETOM Symphony with Power-class comes with lightweight coils that are unmatched for patient comfort. Faster exams, faster throughput, greater patient comfort. Now that's powerful.



unmatched performance.



MAGNETOM Symphony with Power-class is the only MRI in its class to offer these cutting-edge clinical applications as standard features: Parallel Imaging with *syngo* GRAPPA for fast spine imaging; (T2 TSE, TA 50 s, matrix 640); *syngo* SPACE for accurate 3D imaging with all contrasts; and *syngo* VIEWS for efficient 3D breast scans with Parallel Imaging.



So advanced, it's virtually future-proof.

Another unique feature of MAGNETOM Symphony with Power-class is the ability to upgrade to Tim® (Total imaging matrix) technology whenever you're ready. Tim is the first seamless, whole body surface coil design that combines up to 76 seamlessly integrated coil elements with up to 32 independent RF channels. With Tim, you can perform the most advanced clinical applications with no coil changes or patient repositioning.





Expect more patient throughput:

New clinical applications to boost referrals. And revenue.

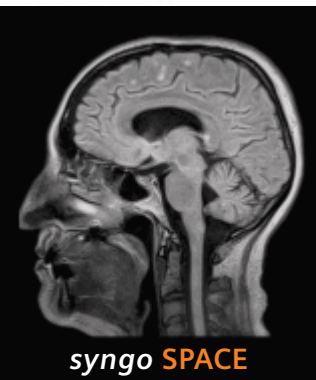
Go where you could never go before.

With a complete range of clinical applications not available anywhere else, MAGNETOM Symphony with Power-class gives you the ability to serve all kinds of patients, and fulfill any requirements from referring physicians.

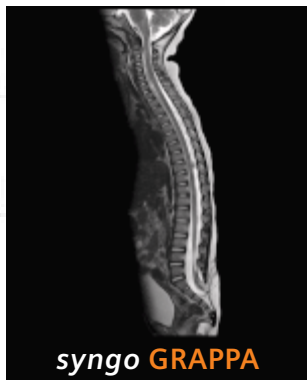
syngo BLADE has the unique capability to correct for all motion artifacts in all imaging planes, and for all anatomies. Even in cases of severe movement with difficult-to-manage patients. This reduces the need for sedation while increasing the ability to acquire high resolution imaging on the first scan.

syngo SWI (Susceptibility Weighted Imaging) reveals blood products and venous structures with great clarity in minutes. This allows physicians to detect the very small intracranial hemorrhages, and initiate therapies at the earliest possible time.

syngo GRAPPA is a Parallel Imaging technique that delivers robust image quality and speeds up most exams, including spine imaging for small children or patients with severe back pain.



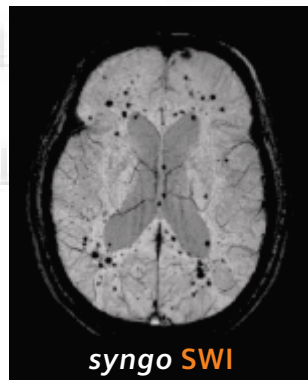
syngo SPACE



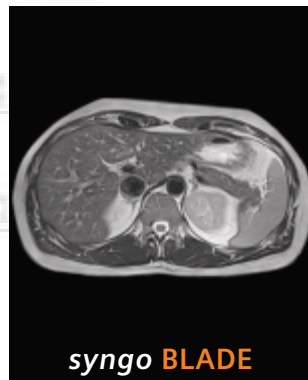
syngo GRAPPA



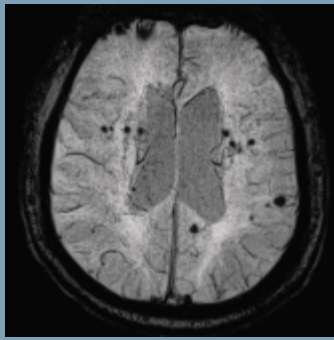
syngo VIEWS



syngo SWI



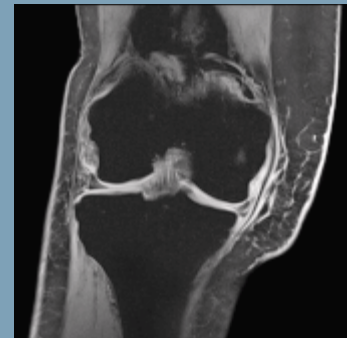
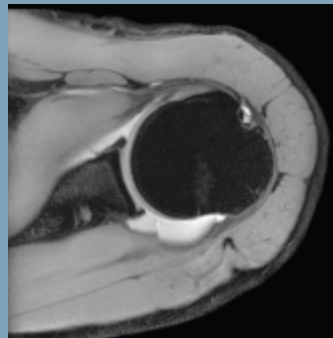
syngo BLADE



Enhancing diagnostic confidence

syngo SWI

Sensitive for micro-bleedings and venous malformations.



Reducing scan times with Parallel Imaging

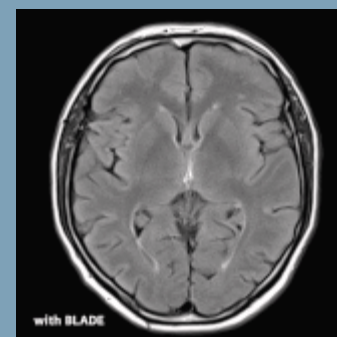
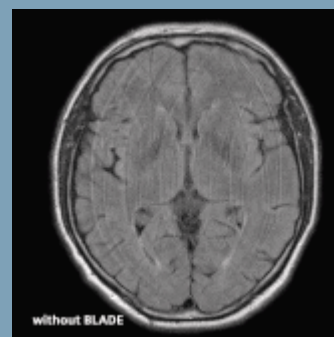
syngo GRAPPA

Efficient orthopedic imaging: fast C-spine scan (TA 1:37 min, matrix 448); high-resolution shoulder exam with off-center fat saturation (TA 3:59 min, matrix 640); fast knee scan (TA 2:06 min, matrix 512).

The comfort of free-breathing

2D PACE

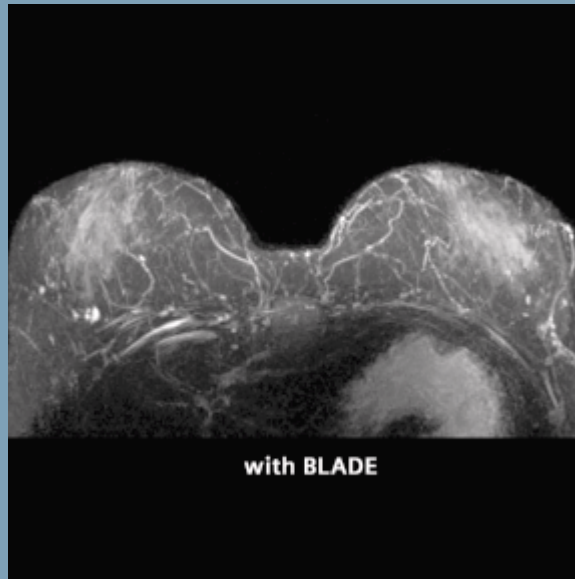
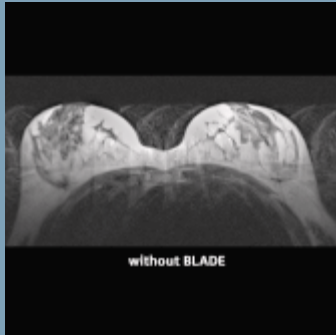
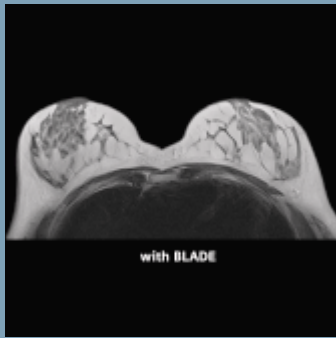
MRCP without respiratory belt or cushion (GRAPPA 2, matrix 384, TA 3:32 min).



Motion correction in all body parts

syngo BLADE

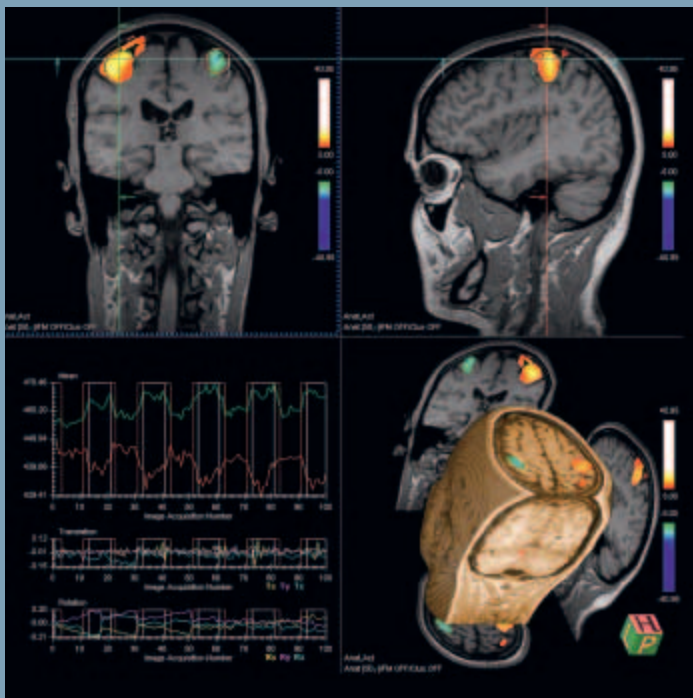
Robust and versatile: all orientations, all contrasts, and for head, spine, breast, joints, and abdomen.



Industry-first for breast exams

syngo BLADE

Enhanced image quality, reduced repetition of scans (left: T2 TSE, TA 2:34 min; right: T2 TIRM, matrix 320, TA 3:40 min).

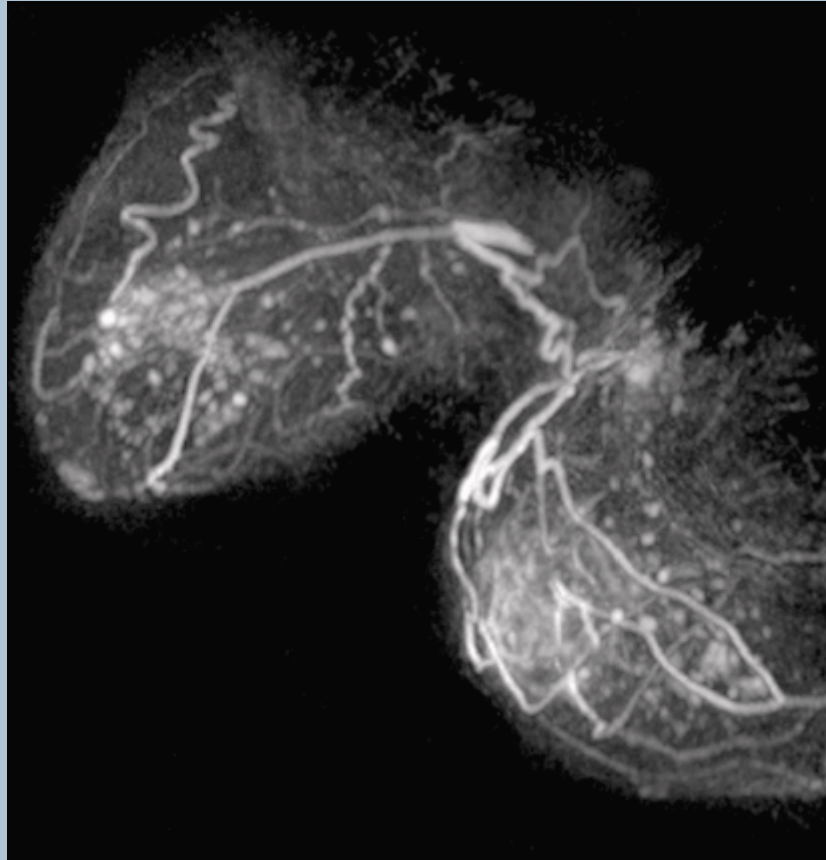


Future-proof applications

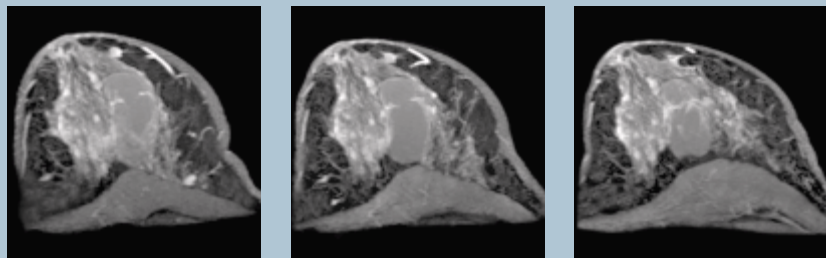
functional MRI

With Inline Technology even advanced applications like fMRI go easy and intuitively.

3D breast imaging. Standard with Power-class.



syngo VIEWS enables 3D bilateral breast imaging with high spatial and temporal resolution, providing excellent diagnostic capabilities in breast disease. *syngo* VIEWS allows you to boost ROI with new referrals for breast MRI.



Expect more ease of use:

Its most powerful feature may be simplicity.



syngo, the highly intuitive Siemens cross-modality user interface, is the basis for all our applications. With *syngo*, you'll be able to streamline workflow, speed patient throughput, and reduce training time. Which translates to better efficiency. And a better bottom line.

With Power-class, speed and ease go hand-in-hand. Along with shorter exams, patients enjoy the open design and the comfort of lightweight coils. Another big advantage of MAGNETOM Symphony is feet-first access for a large variety of exams. This increases patient comfort tremendously.





For seamless workflow at the scanner.

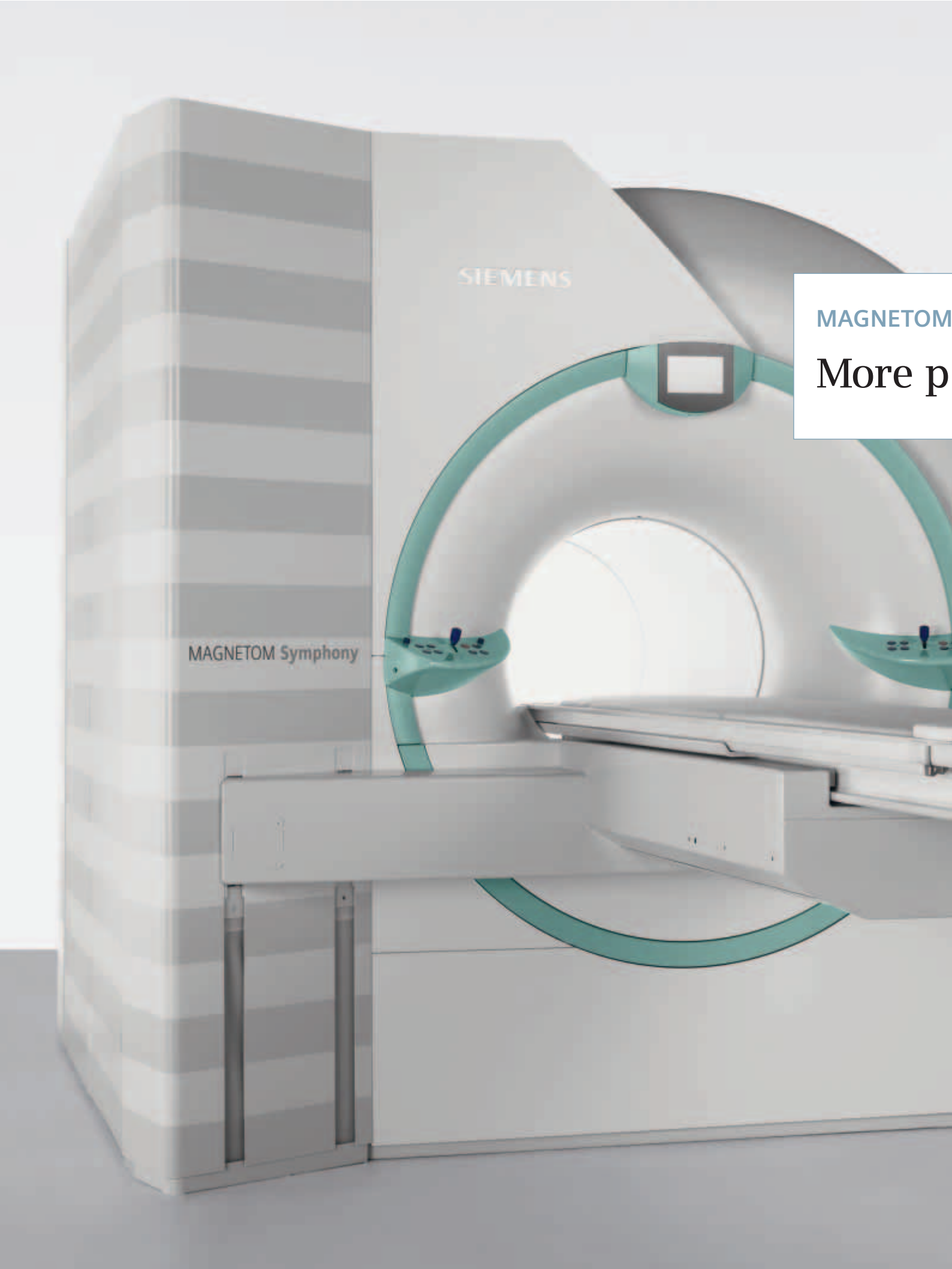
- Expand capabilities with virtually no learning curve with **syngo**, our highly intuitive cross-modality user interface, is the basis for all MAGNETOM Symphony applications. Enabling you to expand your capabilities in every clinical MR field.
- Keep on working during reconstruction and display images immediately, rather than wait for post-processing, using **Inline Technology**.
- Reproduce slice positioning in the head. No manual adjustments are required. **AutoAlign** makes it easy to standardize exams so follow-ups provide reliable comparisons.

For seamless workflow beyond the scanner.

- Exchange and retrieve entire protocol information in an easy drag-and-drop step. **Phoenix** makes it easy to access standard protocols that make exams more reproducible.
- Get second opinions and answers to clinical questions while a patient is being scanned. Using **syngo Expert-i**, physicians and experts can remotely access the MR suite from anywhere in the network.

Siting is simple, too.

The ease and simplicity of MAGNETOM Symphony with Power-class even extends to its siting requirements. The most compact 1.5T in its class, MAGNETOM Symphony with Power-class can typically be sited in a 30 m² or 323 square foot space. And, with only one dual cabinet, which can easily be placed against a wall, it's even more space-saving. So space not used for the MRI scanner can be used for patient prep or waiting areas, which can translate to more flexible patient scheduling and faster throughput. The ease of use of MAGNETOM Symphony with Power-class starts with installation and never stops.



SIEMENS

MAGNETOM Symphony

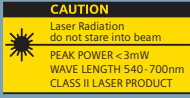
MAGNETOM

More p

Symphony with Power-class:

Power to you.





Acknowledgement:

St. Vincent's Hospital, Melbourne, Australia
AKH Linz, Austria
Aerztehaus Harlaching, Munich, Germany
Institut für Mikrotherapie, Bochum, Germany
Kaufmann, Krueck, Elsner, Blaubeuren, Germany
MR Bremen-Nord, Bremen, Germany
University Hospital Grosshadern, Munich, Germany
Tokyo Metropolitan Ebara Hospital, Tokyo, Japan
Cedars-Sinai, Los Angeles, USA
Fisher-Titus Medical Center, Norwalk, USA
New York University, New York, USA
Pratt Medical Center, Fredericksburg, USA

The information in this document contains general descriptions of the technical options available, which do not always have to be present in individual cases. The required features should therefore be specified in each individual case at the time of closing the contract.

Siemens reserves the right to modify the design and specifications contained herein without prior notice. Please contact your local Siemens Sales representative for the most current information.

syngo Evolve Package: In the event that upgrades require FDA approval, Siemens cannot predict whether or when the FDA will issue its approval. Therefore, if regulatory clearance is obtained and is applicable to this package, it will be made available according to the terms of this offer.

Note: Any technical data contained in this document may vary within defined tolerances. Original images always lose a certain amount of detail when reproduced.

Please find fitting accessories:
www.siemens.com/medical-accessories

© 02.2008, Siemens AG
Order No. A91MR-400-2C-7600
Printed in Germany
CC MR 00400 WS 02083.

Contact

In the USA

Siemens Medical Solutions USA, Inc.
51 Valley Stream Parkway
Malvern, PA 19355
Telephone: +1 888-826-9702
Telephone: +1 610-448-4500
Telefax: +1 610-448-2254

In Japan

Siemens-Asahi
Medical Technologies Ltd.
Takanawa Park Tower 14F
20-14, Higashi-Gotanda 3-chome
Shinagawa-ku
Tokyo 141-8644
Telephone: +81 3 5423 8411

In Asia

Siemens Medical Solutions
Asia Pacific Headquarters
The Siemens Center
60 MacPherson Road
Singapore 348615
Telephone: +65 6490-6000
Telefax: +65 6490-6001

In Germany

Siemens AG, Medical Solutions
Magnetic Resonance
Henkestr. 127, D-91052 Erlangen
Germany
Telephone: +49 9131 84-0

Siemens AG
Wittelsbacherplatz 2
D-80333 Munich
Germany

Headquarters

Siemens AG, Medical Solutions
Henkestr. 127, D-91052 Erlangen
Germany
Telephone: +49 9131 84-0
www.siemens.com/medical