

GE Healthcare

# Precision 500D

Digital radiography and fluoroscopy system



What do you look for in a classical digital R&F system? Exceptional image quality at low dose, certainly. Increased clinical productivity and patient throughput, definitely. Long-term reliability, undoubtedly. Well, you've just found your system.

# From A to Z for R&F.

Precision™ 500D simplifies and improves virtually every aspect of your operation. You'll accommodate more patients than ever before, thanks largely to a remarkably user-friendly interface. Generate images of extraordinary clarity with an imaging chain that features a 12-bit CCD-based camera and high-resolution intensifier. Conserve dose with a range of advanced dose-management features. And transfer images and patient information instantly, effortlessly, through a completely integrated DICOM 3.0 connectivity package.

Best of all, since Precision 500D is designed and manufactured by industry leader GE Healthcare, you'll do it all with a system you can count on day in, day out. Year in, year out. Patient in, patient out.



A GE exclusive, AutoEx™ dynamic exposure optimization allows the system itself to select the best techniques, focal spot, dose rate and spectral filter for each procedure. As imaging proceeds, it automatically adjusts parameters in real time for optimum contrast-to-noise ratio, dose management and productivity.





Options like SmartFluoro™ fluoro noise reduction (with real-time, user-adjustable digital filters) and variable-frame-rate pulsed fluoroscopy reduce dose even further.



Dose saving capabilities allow for automatic adjustments to reduce dose for smaller patients.

# Easy dose it.

Sure, you could improve image quality by increasing dose. Doing it at low dose is the trick – at which Precision 500D excels. By combining the finest image-capturing equipment and dose-managing capabilities today's technology has to offer.

It starts with the imaging chain, which features a 12-bit CCD-based camera. Then there's AutoEx, which automatically adjusts key image-acquisition parameters in real time for optimum quality. Meanwhile, closed-loop Automatic Brightness Control and patented Extended Dynamic Range circuitry maintain contrast and minimize blooming.

For dose management, fluoro store-to-hard-disk and automatic last-image-hold permit direct diagnosis without extra radiographic exposures. Spectral filtration minimizes absorbed dose during fluoroscopy. Virtual Collimation lets you gauge collimator position without additional exposures, while digital spatial filters optimize radiographic image quality to complete the low-dose picture.

# Seeing is relie



Carotid DSA



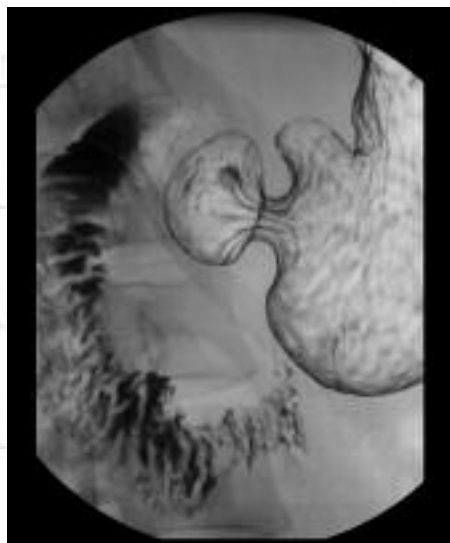
Myelogram



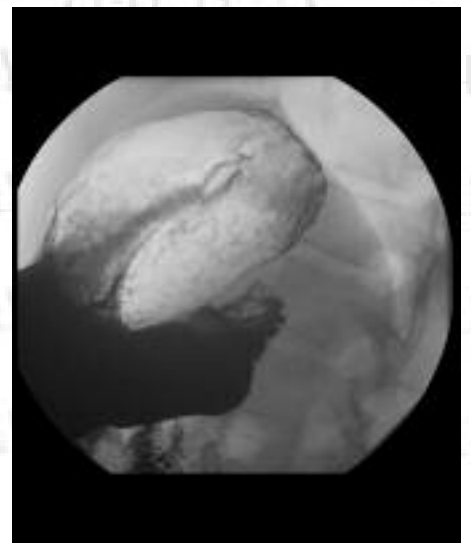
Myelogram



Esophogram



Gastrointestinal (UGI)



Gastrointestinal (UGI)

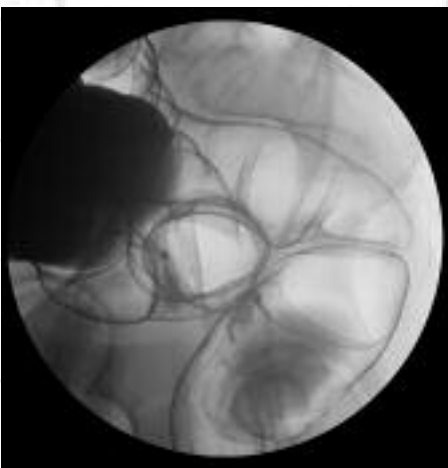
ving.



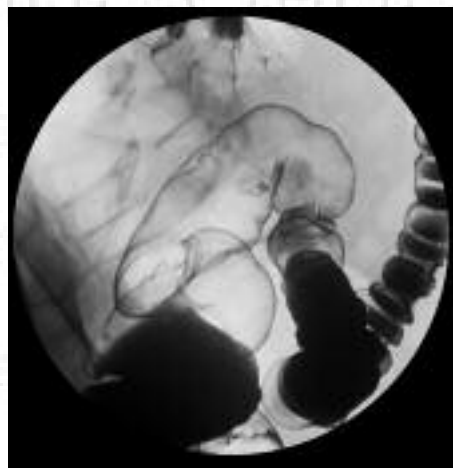
Air contrast colon



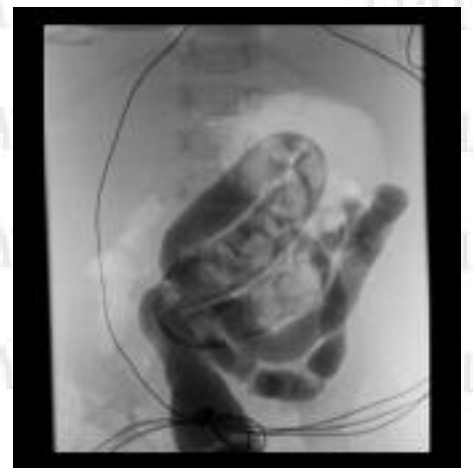
Air contrast colon



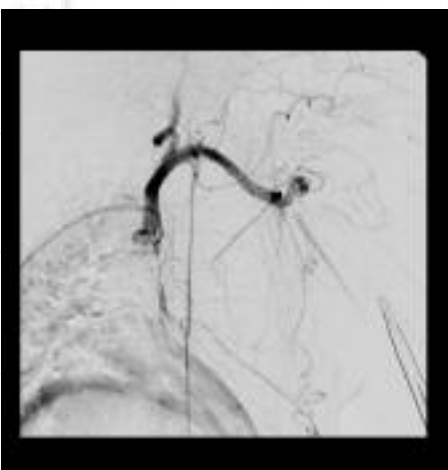
Air contrast colon



Air contrast colon



Pediatric colon



Subclavian DSA



T-Tube cholangiogram



Hysterosalpingogram





An overhead tube console interface lets you control kV and mAs, so you can adjust protocols without leaving the room.

# Breakthrough.

Ever seem like you have far too many patients – and far too little time? Precision 500D has all the features you need to boost patient throughput and your productivity.

Improved throughput begins right at exam setup. Simply select the patient from a PACS-generated worklist and choose the appropriate exam. The system automatically selects the best protocols.

Controls are grouped by frequency of use for quick access. The symmetrically arranged

power-assist handle, fluoro controls and record controls are easy to operate whether you're right- or left-handed. Table angulation is controlled from either the Intelligent Digital Device or tableside control panel. And the touch of a button lets you control everything from magnification and collimation to angulation, grid and Bucky mode.

The incredibly easy-to-use integrated console provides single-point control for most exams. Its DICOM 3.0 interface accommodates both PACS-worklist and barcode entry of patient data to maximize throughput and minimize errors.

Your relationship with GE doesn't end when you take delivery of your system. That's just the beginning. Because with Precision 500D, you don't just get a highly reliable system. You get a highly reliable partner.

Hardware and software support. Asset management tools. On-demand applications and remote technical support. Training. Education. The industry's most skilled and highly trained field and online engineers. GE provides it all, and even puts it at your fingertips. With InSite™ remote diagnostics and iLinq™ remote support, you can access prompt, expert troubleshooting from live engineers or applications specialists – right from your console.

What's more, InSite IQST lets you monitor your image quality proactively. The touch of a button sends a phantom image to GE engineers for prompt analysis and recommendations. Bottom line? You're consistently up and running.

# Dedicated caregivers.



InSite's constant, encrypted data connection lets your GE engineer link to your system digitally from anywhere for remote monitoring diagnosis, system repair – and higher uptime.



©2007 General Electric Company.  
GE and GE Monogram are trademarks of General Electric Company.

Precision, SmartFluoro, InSite, iLinq, AutoEx, and iCenter  
are trademarks of General Electric Company.

General Electric Company, doing business as GE Healthcare.

## Healthcare Re-imagined

GE is dedicated to helping you transform healthcare delivery by driving critical breakthroughs in biology and technology. Our expertise in medical imaging and information technologies, medical diagnostics, patient monitoring systems, drug discovery, and biopharmaceutical manufacturing technologies is enabling healthcare professionals around the world to discover new ways to predict, diagnose and treat disease earlier. We call this model of care "Early Health." The goal: to help clinicians detect disease earlier, access more information and intervene earlier with more targeted treatments, so they can help their patients live their lives to the fullest. Re-think, Re-discover, Re-invent, Re-imagine.

GE Healthcare  
3000 North Grandview  
Waukesha, WI 53188  
U.S.A.

[www.gehealthcare.com](http://www.gehealthcare.com)



imagination at work