

## ROLLUX D *for Mammography*

*The missing link between analog  
and digital mammography viewing*



*Rollux D with 5 Megapixel  
Monitors Installed*

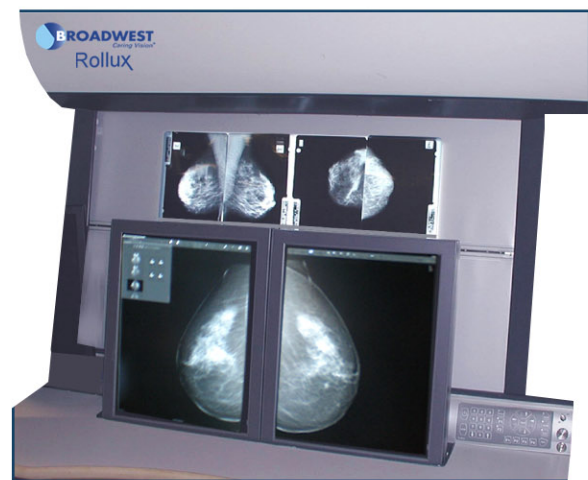


*Keypad, light dimmer and joystick for  
shutter control*

No turning left or right, no digitizing file rooms. Auto-masking with one button or footswitch to keep reading without mechanical distractions. Transmitted light around films is minimized by auto-dimming and masking.

Features:

- Close, ergonomic proximity to LCD monitors and films
- Adjustable monitor mounts angle from vertical to 190 degrees to match incline of film belt
- Full dimming of luminance level with each frame
- Auto-masking of shutters to each frame's film configuration
- Roaming joystick for shutter movement, including spot size
- Hands-free operation from a footswitch with on/off light switch



*Start with a conventional analog film viewer  
Install LCD monitors when you advance to digital*

The Rollux D capacity :

Film only operation of 6 over 6 films for 100 frames  
(1200 of 18x24cm films or 800 of 24x30cm)  
or  
200 half-frames of six 18x24cm or  
four 24x30cm films above the monitors

Dimensions without shelf: 75 5/8" high  
x 56 3/4" wide x 24 3/4" deep